

xPoint

Navision Integration Manual
xPoint e-Commerce

Table of Contents

Introduction	3
Prerequisites.....	3
Terms	3
Quick integration steps for the expert	4
Integration Steps	5
1. Installation of ScriptServer tools.....	5
2. Import Navision Tables	5
3. Import Navision CodeUnits	5
4. Import Navision Forms.....	5
5. Customize the codeunit 1 "Application Management".....	5
6. Install NAS service	6
7. NAS service credentials	8
8. Security in Navision database	9
9. NAS Start-up parameter	9
10. Start NAS.....	10
11. Browse your application	10
Update steps for the full ecommerce software	12

Introduction

Navision integration manual will guide you to setup your Navision database as a server for the xPoint ecommerce.

Prerequisites

- xPoint with "Navision Integration" package
- ScriptServer Tools setup

Terms

The following terms will be referenced in this document:

xPoint computer

The computer that the xPoint installation is residing.

NAS computer

The Navision Application Server computer. This computer may be different or the same of the xPoint computer, depending on the architecture that you are working on.

Navision database

The Navision database/company that is been customized to act as a server for the xPoint. The above NAS is connected to this database.

URI

The server URI that an xPoint will be able to connect and retrieve the data. This can have any form starting with "http://".

Examples: "http://test.myserver.com/xPoint/Navision2009",
"http://10.10.10.1/productive-integration",
"http://localhost:8080/navision-wcf"

Quick integration steps for the expert

1. (NAS Computer) Install the ScriptServer Tools on the NAS computer
2. (Navision database) Import the Navision tables.
3. (Navision database) Import the Navision codeunits.
4. (Navision database) Import the Navision forms.
5. (Navision database) Customize the codeunit 1 "Application Management"
6. (NAS Computer) Install a NAS service
7. (NAS Computer) In the NAS service put NTLM administrative credentials
8. (Navision database) In the security of the database, put the user you used in your service in the SUPER role.
9. (NAS Computer) In the "Start-Up parameter" put your URI that the xPoint applications will be able to connect.
10. (NAS Computer) Start NAS; resolve any problems with Navision database *using event viewer*.
11. (xPoint Computer) Browse your xPoint application; add a new service with the preconfigured URI as your connection. (Check out the eCommerce Core Manual for details)

Tips for load balancing:

- Check how many NAS users you can run at the same time using your Navision license!
- Follow steps 6-11 for adding more NASes and register them as new connections to the same service (check ecommerce core manual)
- *Add as many as you can for your site. Load balancing will improve drastically your site's performance, so use it!*

Integration Steps

1. Installation of ScriptServer tools

Follow the tools installation from the setup manual.

2. Import Navision Tables

Import Shared Tables

Import the file "xPoint Common Tables.Nav.fob" which will update the following tables with new fields:

- Customer
- Item
- Sales Header

The type of import must be as "Existing<-New".

Import xPoint Tables

Import the file "xPoint Tables.Nav.fob".

3. Import Navision CodeUnits

Import the file "xPoint CodeUnits.Nav.fob"

4. Import Navision Forms

Import the file "xPoint Forms.Nav.fob"

5. Customize the codeunit 1 "Application Management"

In the method NASHandler the following variable must be added:

<i>Name</i>	<i>DataType</i>	<i>Subtype Length</i>
xPointNASStartup	Codeunit	xPoint NAS Startup

Additionally the following code must be added inside the method body:

```
IF (COPYSTR(Parameter,1,4) = 'ADCS') THEN BEGIN
  IF STRPOS(Parameter,' ADCSID=') > 0 THEN
    IF EVALUATE(ADCSID,COPYSTR(Parameter,STRPOS(Parameter,'=') + 1)) THEN
      ADCSNASStartup.SetNASID(ADCSID)
    ELSE
      ADCSNASStartup.SetNASID('NAS1');
  ADCSNASStartup.RUN;
  CGNASStartedinLoop := TRUE;
END;

/--> xPoint Navision
IF ( COPYSTR(Parameter,1,7) = 'HTTP:/' ) THEN
BEGIN
  xPointNASStartup.SetUrl(Parameter);
  xPointNASStartup.RUN();
  CGNASStartedinLoop := TRUE;
END;
/!-- xPoint Navision
```

```
IF CGNASStartedinLoop = FALSE THEN
CASE Parameter OF
'MAILLOG':
CODEUNIT.RUN(CODEUNIT::"E-Mail Dispatcher");
'SMARTTAG':
STPublisher.StartTimer;
ELSE
IF CPlnSrvSetup.GET(Parameter) THEN BEGIN
```

The grey areas have been left for clarity.

Figure 1: The application code in Navision 4.0

```
ELSE
ADCSNASStartup.SetNASID('NAS1');
ADCSNASStartup.RUN;
CGNASStartedinLoop := TRUE;
END;

//--> xPoint Navision
IF ( COPYSTR(Parameter,1,7) = 'HTTP://' ) THEN
BEGIN
xPointNASStartup.SetUrl(Parameter);
xPointNASStartup.RUN();
CGNASStartedinLoop := TRUE;
END;
//<-- xPoint Navision

IF CGNASStartedinLoop = FALSE THEN
CASE Parameter OF
'MAILLOG':
CODEUNIT.RUN(CODEUNIT::"E-Mail Dispatcher");
```

By compiling the codeunit can reveal if there are any errors.

6. Install NAS service

You can install a new NAS service or use an existing one. You can install a NAS using the Navision installation. If you need to install one more NAS then you have to use the command line.

Installing a NAS in command line.

You need to follow the next steps to install a new NAS in the NAS computer using the command line:

(Note that you should replace the bold text with your own installation specific details.)

(Check also Step 9 that will help you pick the startup-parameter)

If you are running your MS Dynamics NAV on a **SQL database**:

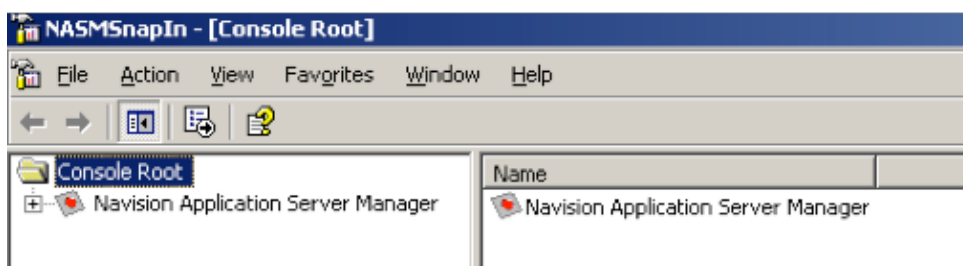
1. Use the command prompt and navigate to the Application Server folder
2. Uninstall the current NAS with the following command:
`NasSQL uninstallservice,appservername="servername-SQL"`
3. Re-register the NAS with the following command:
`nassql installservice, appservername="servername-SQL", servername="sqlServerName",
nettype=tcp, database="databaseName", company="companyName",
startparameter=<Uri>`
4. Start the service from the Service Manager in Administrative Tools

If you are running your MS Dynamics NAV on a **classic database**:

1. Use the command prompt and navigate to the Application Server folder
2. Uninstall the current NAS with the following command:
`Nas uninstallservice,appservername="servername-CLASSIC"`
3. Re-register the NAS with the following command:
`nas installservice, appservername="servername-CLASSIC", servername="ServerName",
nettype=tcp, company="companyName", startparameter=<Uri>`
4. Start the service from the Service Manager in Administrative Tools

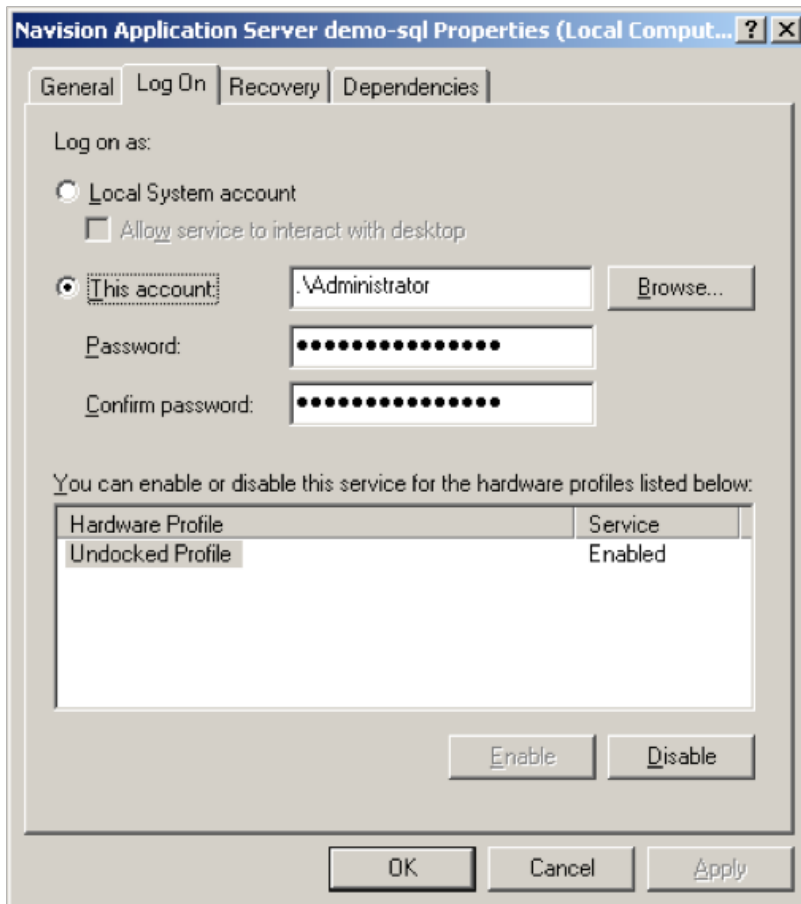
Then you can use the NAS panel to update/manage the NAS registrations.

Figure 2: A Navision 4.0 panel



7. NAS service credentials

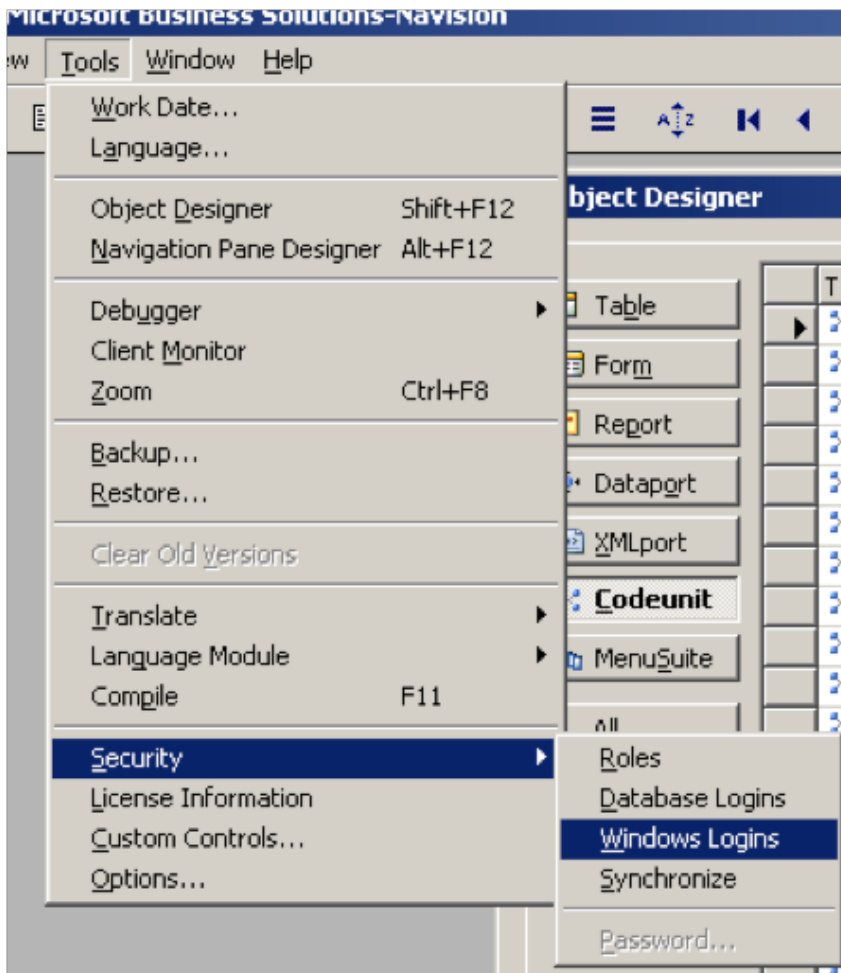
In the services management console the service credentials must be set to an administrator.



Then the service will have all the required access to support the windows communication foundation.

8. Security in Navision database

Now the access of the above user must be set up in the Navision database.



The user must be added in the windows logins and be given administrator access (full access, SUPER role).

9. NAS Start-up parameter

Setting up the startup parameter will load the WCF server in a specific address so you can use it from an xPoint installation.

You can access these settings by opening the "Navision Application Server Manager" Snap-In.

Start-Up Parameter	<code>http://localhost:9001/ScriptServer/xPoint</code>
--------------------	--

If you add an invalid URI, then the service will fail on startup. You can check if your URI is valid by using the "xPoint WCF Test Form" that there has already been imported.

10. Start NAS

 Navision Application Server demo-sql

The application server can now be started either from the NAS Management console, or from the services panel.

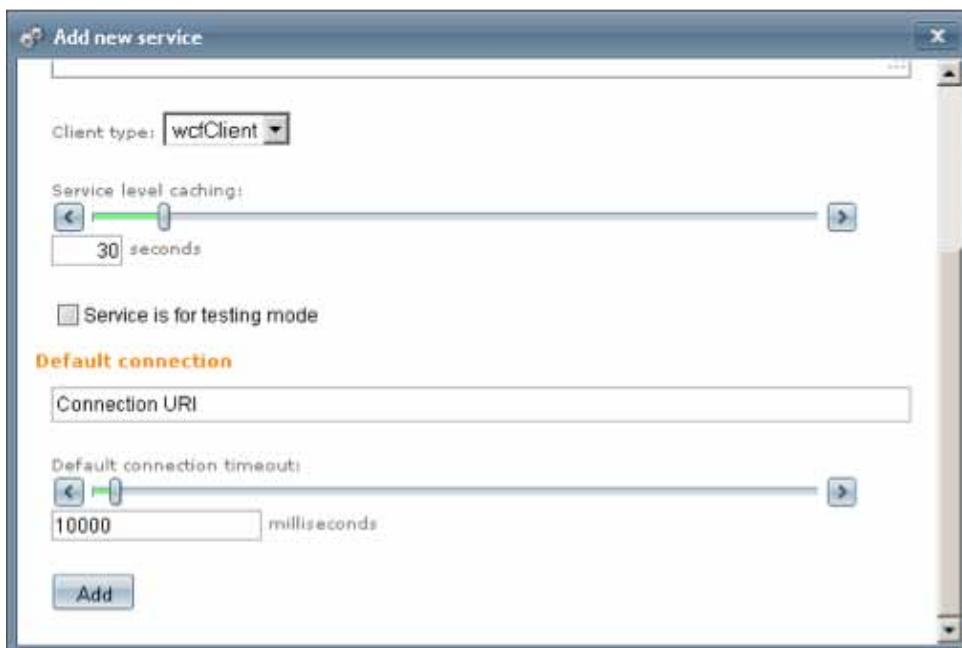
When this is done open the event viewer and check if the specific service is reporting any errors. If it is, stop the service, resolve the errors and repeat, until you see the message that NAS has started successfully.

11. Browse your application

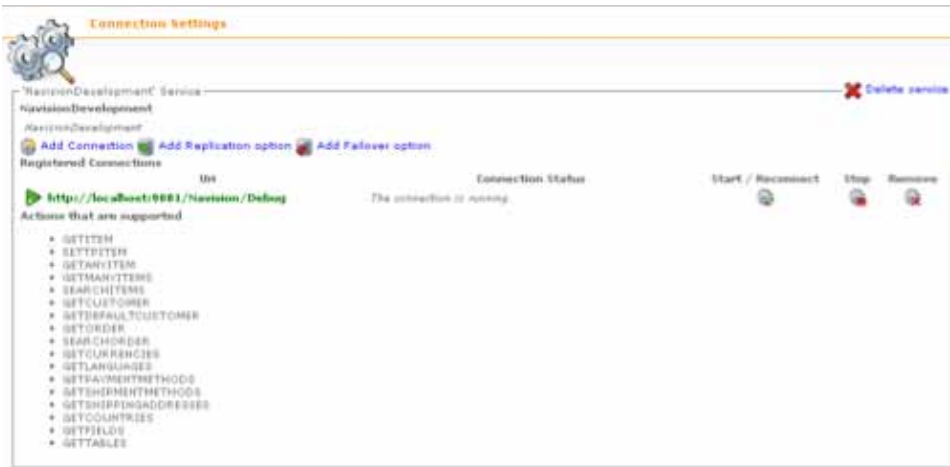
(Also advise the ecommerce core manual for more details)

Browse your xPoint on the settings manager and browse ScriptServer / Ecommerce / Connections panel.

A new service must be created and the URI that you selected before must be added as the default connection.



When your service is connected you should be able to browse the available actions:



Now the frontend elements can reach your backend system, and you can proceed in customizing your site.

Update steps for the full ecommerce software

Many of the ecommerce parts are external to the application, so the update can only be provided manually for this moment. In some cases, like Navision, the parts that are connecting are subject to only manual changes.

Use the following guide to update an existing ecommerce site with new features of the Navision connection.

Hint: Use Failover while updating when you can. This will keep your ecommerce site running and serving your customers with an old database replica.

- (NAS Computer) Close all NAS services that are connected to the database to be updated.
- (NAS Computer) Close the "ScriptServer.Update" and "ScriptServer.CCL" services.
- (NAS Computer) Uninstall the old version of the ScriptServer Tools and install the new one.
- (xPoint Computer) Close the "ScriptServer.Update" and "ScriptServer.CCL" services.
- (xPoint Computer) Uninstall the old version of the ScriptServer Tools and install the new one.
- (Navision database) Manually backup any previous Navision customization (if any).
- (Navision database) Import the new Navision tables.
- (Navision database) Import the new Navision codeunits.
- (Navision database) Import the new Navision forms.
- (Navision database) Apply customizations on the new codeunits (if any).
- (NAS Computer) Start all NAS services that are connected to the database to be updated. *Check the event viewer and resolve any problems that might have arisen with the database.*
- (xPoint Computer) Update the xPoint application.
- (xPoint Computer) Import new type configuration or start customizing your own (see ecommerce core manual).



xPoint

ScriptServer – 15 years in business – dedicated to meet our customers challenges of tomorrow

ScriptServer has 15 years of expertise in developing, selling and supporting web based software in standard packages.

New platform: xPoint.NET – e-commerce, CMS and intranet all in one

Since 2009 ScriptServer has developed a new platform: xPoint. The platform contains all products in one platform and is based on today most advanced it-technology. Packages and components can be purchased in the web based ScriptServer Marketplace.

The ScriptServer organization

Our office in Denmark is the HQ for the ScriptServer activities. We have the responsibility for development, sales, support, production and administration.



ScriptServer Solutions A/S

Herstedvang 7C
2620 Albertslund
Denmark
Phone +45 33 26 31 00
support@scriptserver.com
www.scriptserver.com



ISV/Software Solutions
Custom Development Solutions